

R 2022 AUSTRALIAN ACEBOARD CHAMPIONSHIPS



Australian Windsurfing Association

and

Lake Cootharaba Sailing Club



THE APOLLONIAN HOTEL



SAILING INSTRUCTIONS

1. RULES

- 1.1. The championships will be governed by these Sailing Instructions and the [Notice of Race](#).
- 1.2. The International Raceboard [class rules](#) and the [class championship rules](#) apply unless they conflict with rules in 1.1.
- 1.3. The [Windsurfing Competition Rules](#) (WCR) and the [special regulations of Australian Sailing](#) apply unless they conflict with 1.1 or 1.2.

2. NOTICES TO COMPETITORS

Notices to competitors will be posted on the notice board located outside on the clubhouse wall at the stairs.

3. CHANGES TO SAILING INSTRUCTIONS

- 3.1. Any change to the schedule will be emailed to competitors and posted by 18:00 the day before it takes effect.
- 3.2. Any other change to the sailing instructions will be emailed to competitors and posted at least 1 hour before the first start of the day.

4. SAFETY

A board that retires from the race shall notify the race committee as soon as possible.

5. SCHEDULE

Day	Event	Time
Sunday	<i>Optional: warm up races, club racing with LCSC fleet, \$15 day entry fee</i>	11:00* and 13:30*
	Championship registration	15:30-17:00
Monday	Championship registration	09:00-10:00
	Competitors' briefing	10:00-10:30
	Championship racing day 1	11:00*
	Welcome night function at the Apollonian Hotel - purchase your own dinner and drinks	18:30
Tue.	Championship racing day 2	11:00*
	Class meeting	17:30
Wed.	Championship racing day 3	11:00*
	Function	TBA
Thu.	Championship racing day 4	11:00*
	Presentation at Apollonian Hotel	17:00

* *First warning signal not before the time indicated.*



5.1. A maximum of 15 races are scheduled in the series.

5.2. A lunch break will be signalled on the start/finish boat with AP over H.

5.3. On Thursday no warning signal will be made after 15:00.

6. SIGNALS MADE ASHORE

6.1. Signals made ashore will be displayed on the flagpole on the northern end of the clubhouse.

6.2. When flag AP is displayed ashore, '1 minute' is replaced with 'not less than 30 minutes'. This changes WCR race signals.

7. FLAG, DIVISIONS, COURSES

7.1. Attachment A shows the flag, divisions, courses and how marks must be passed.

7.2. The compass bearing of the first leg will be displayed on the start boat no later than the warning signal.

8. ROUNDING MARKS

Mark 1 and gate marks 2s and 2p will be yellow inflatable buoys.

9. START

9.1. The start line will be between a staff displaying an orange flag on the start boat at the starboard end and yellow mark 2p at the port end.

9.2. The start boat is a mark of the course and the buoy attached to the stern of the boat is a part of it.

10. FINISH

The finish line will be between a staff displaying an orange flag on the start boat at the port end and a pink spherical mark at the starboard end.

11. TIME LIMIT

A board failing to finish within 20 minutes after the first board of its division sails the course and finishes will be scored TLE.

12. REPLACEMENT OF EQUIPMENT

Substitution of damaged or lost equipment will not be allowed unless approved by the Race Committee. Requests for substitution shall be made to the Race Committee at the first reasonable opportunity.

13. PROTESTS

13.1. Protest forms may be obtained from the office.

13.2. Protests and requests for redress or reopening shall be delivered within the appropriate time limit.

For each division, the protest time limit is 60 minutes after the last board has finished the last race of the day.

13.3. Notices will be posted no later than 30 minutes after the protest time limit to inform competitors of hearings in which they are parties or named as witnesses. Hearings will be held in the protest room, at LCSC, beginning as soon as practical.

14. PRIZES

As per NOR.

15. DISCLAIMER OF LIABILITY

Competitors participate in the regatta entirely at their own risk. See WCR rule 4, Decision to Race. The organizing authority will not accept any liability for material damage or personal injury or death sustained in conjunction with or prior to, during, or after the regatta.

16. SUPPLEMENTARY NOTES

We are part of a small community in Boreen Point and wish to respect the activities of our neighbours.

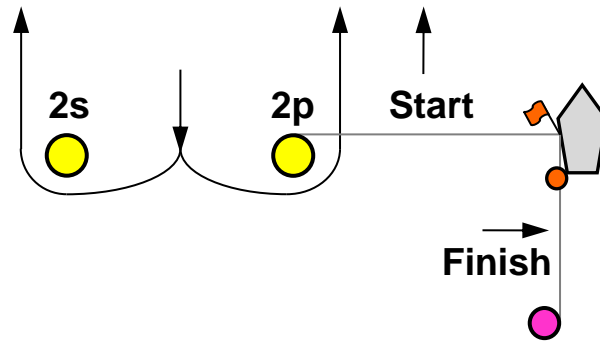
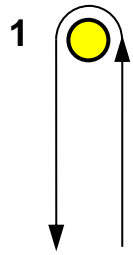
Please remove all trash into the bins provided.


Please be considerate in parking cars, boards and trailers so that traffic can pass easily, and residents' access is not blocked.

We offer secure trailer parking at the LCSC storage yard off Teewah Street. Please ask us if you wish to store your trailer there.



ATTACHMENT A



Flag	Fleet	Type	Order of rounding
G 	1	National Champion Fleet	Start -1-2s/2p -1-2s/2p -1-2p- Finish
	2	Sprint Fleet	Start -1-2s/2p -1-2p- Finish



THE APOLLONIAN HOTEL

