



Lake Cootharaba  
Sailing Club

and

Australian  
Windsurfing



## SAILING INSTRUCTIONS

### 1. RULES

- 1.1. The championships will be governed by these Sailing Instructions and the [Notice of Race](#).
- 1.2. The International Raceboard [class rules](#) and the [race management policies](#) apply unless they conflict with rules in 1.1.
- 1.3. The [Windsurfing Competition Rules](#) (WCR) and the [special regulations of Australian Sailing](#) apply unless they conflict with 1.1 or 1.2.

### 2. NOTICES TO COMPETITORS

Notices to competitors will be posted on the notice board located outside on the clubhouse wall at the stairs.

### 3. CHANGES TO SAILING INSTRUCTIONS

- 3.1. Any change to the schedule will be emailed to competitors and posted by 18:00 the day before it takes effect.
- 3.2. Any other change to the sailing instructions will be emailed to competitors and posted at least 1 hour before the first start of the day.

### 4. SAFETY

A board that retires from the race shall notify the race committee as soon as possible.

### 5. SCHEDULE

Day	Event	Time
Thursday	Championship registration	08:00-10:00
	Competitors' briefing	10:00-10:30
	<b>Championship racing day 1</b>	<b>11:00*</b>
	Welcome night function at the Apollonian Hotel - purchase your own dinner and drinks	18:30
Friday	<b>Championship racing day 2</b>	<b>11:00*</b>
	Class meeting at LCSC	17:30
Sat.	<b>Championship racing day 3</b>	<b>11:00*</b>
Sunday	<b>Championship racing day 4 - session 1**</b>	<b>11:00*</b>
	<b>Championship racing day 4 - session 2**</b>	<b>13:30*</b>
	Presentation at LCSC	15:30*

\* *First warning signal not before the time indicated.*

\*\* *Sunday racing is in conjunction with LCSC club racing. Raceboards share the course with club boats but have a separate start.*



- 5.1. A maximum of 14 races are scheduled in the series.
- 5.2. 1 race must be completed to form the championships.
- 5.3. A lunch break will be signalled on the start/finish boat with AP over H.
- 5.4. On Sunday no warning signal will be made after 15:00.

## **6. SIGNALS MADE ASHORE**

- 6.1. Signals made ashore will be displayed on the flagpole on the northern end of the clubhouse.
- 6.2. When flag AP is displayed ashore, "1 minute" is replaced with "not less than 30 minutes". This changes WCR race signals.

## **7. FLAGS, DIVISIONS, COURSES**

- 7.1. Attachment A shows the flags, divisions, courses and how marks must be passed for all races other than on Sunday.
- 7.2. Attachment B shows the flags, divisions, courses and how marks must be passed for races on Sunday, when the course is shared with club racing boats.
- 7.3. The numeral pennant indicating the course will be displayed on the start boat no later than the warning signal.
- 7.4. The compass bearing of the first leg will be displayed on the start boat no later than the warning signal.

## **8. ROUNDING MARKS**

All rounding marks will be yellow inflatable buoys.

## **9. START**

- 9.1. The start line will be between a staff displaying an orange flag on the start boat at the starboard end and a yellow mark at the port end.
- 9.2. The start boat is a mark of the course, and the buoy attached to the stern of the boat is a part of it.

## **10. FINISH**

The finish line will be between a staff displaying an orange flag on the start boat at the port end and a pink spherical mark at the starboard end.

## **11. Time Limit**

The time limit is 60 minutes, and the finishing window is 30 minutes.

## **12. REPLACEMENT OF EQUIPMENT**

Substitution of damaged or lost equipment will not be allowed unless approved by the Race Committee. Requests for substitution shall be made to the Race Committee at the first reasonable opportunity.

## **13. PROTESTS**

- 13.1. Protest forms may be obtained from the office.
- 13.2. Protests and requests for redress or reopening shall be delivered within the appropriate time limit.  
For each division, the protest time limit is 60 minutes after the last board has finished the last race of the day.
- 13.3. Notices will be posted no later than 30 minutes after the protest time limit to inform competitors of hearings in which they are parties or named as witnesses. Hearings will be held in the protest room, at LCSC, beginning as soon as practical.

## **14. PRIZES**

As per NOR.

## **15. DISCLAIMER OF LIABILITY**

Competitors participate in the regatta entirely at their own risk. See WCR rule 3, Decision to Race. The organizing authority will not accept any liability for material damage, personal injury or death sustained in conjunction with, prior to, during, or after the regatta.

## **16. SUPPLEMENTARY NOTES**

*We are part of a small community in Boreen Point and wish to respect the activities of our neighbours.*

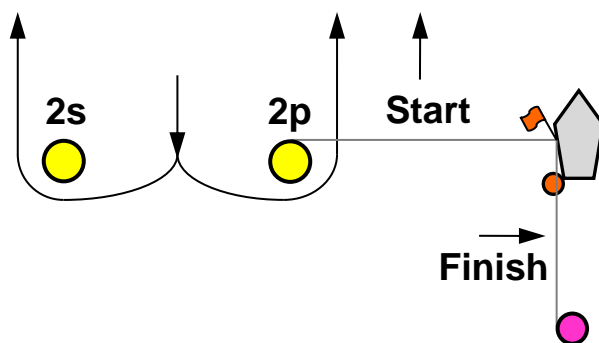
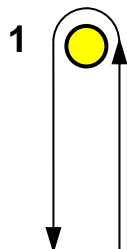
*Please remove all trash into the bins provided and be considerate when parking cars or trailers so that residents' access is not blocked.*


*We offer free and secure trailer parking at our storage yard off Teewah Street.*

# ATTACHMENT A

Course for races on Thursday, Friday and Saturday.

Course 3 

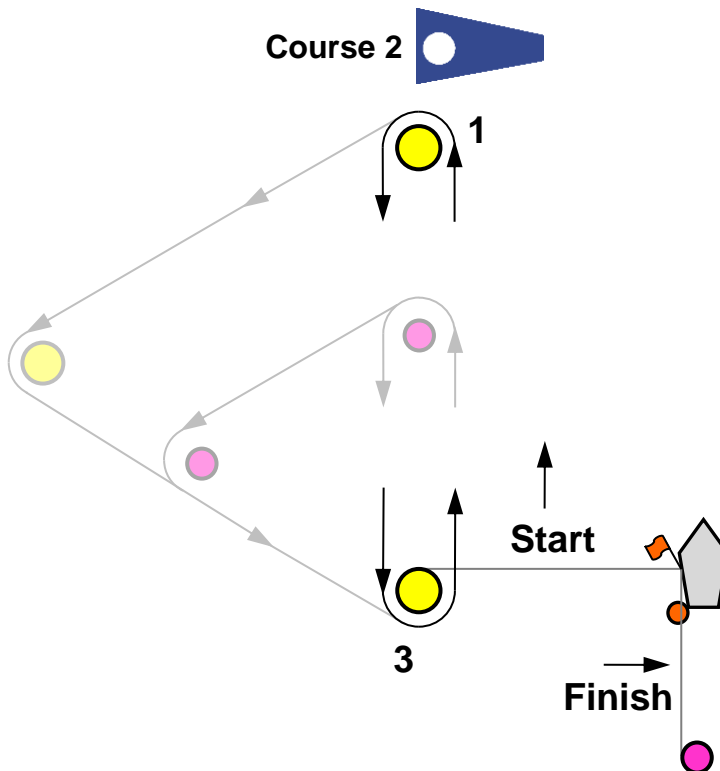
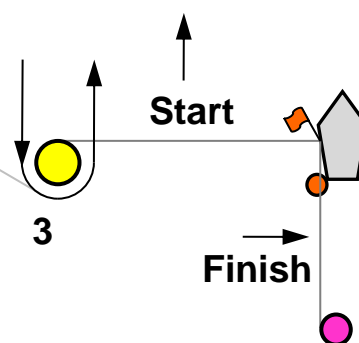
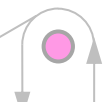
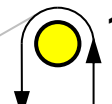
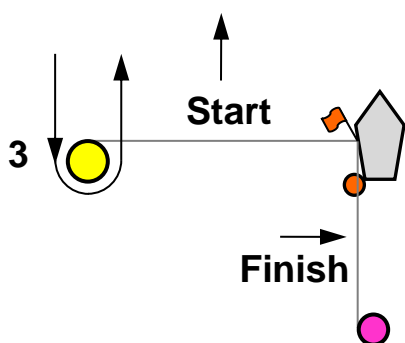
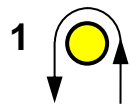





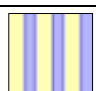
Flag	Division	Type	Order of rounding
J 	R 1	National Champion Fleet	Start <b>-1-2s/2p</b> <b>-1-2s/2p</b> <b>-1-2p-</b> Finish
	R 2	Sprint Fleet	Start <b>-1-2s/2p</b> <b>-1-2p-</b> Finish



# ATTACHMENT B

Courses for Sunday.



Flag	Div.	Type	Order of rounding course 1	Order of rounding course 2
	R 1	Raceboards National Champion Fleet	Start -1-3-1-3-1-3- Finish	
	R 2	Raceboards Sprint Fleet	Start -1-3-1-3- Finish	
	2	Monohulls YS below 150	Start -1-3-1-3 -1-3- Finish	Start -1-2-3-1-3 -1-2-3- Finish
	4	Beginners and Monohulls YS 150 and over	Start -A-3-A-3 -A-3- Finish	Start -A-B-3-A-3 -A-B-3- Finish
	3	Weta	Start -1-3-1-3 -1-3-1-3- Finish	Start -1-2-3-1-3 -1-2-3-1-3- Finish
	1	Multihulls	Start -1-3-1-3 -1-3-1-3- Finish	Start -1-2-3-1-3 -1-2-3-1-3- Finish

